

## RESEARCH ARTICLE

# Fifty years of reduction in sulphur deposition drives recovery in soil pH and plant communities

Fiona M. Seaton<sup>1</sup>  | David A. Robinson<sup>2</sup>  | Don Monteith<sup>1</sup>  | Inma Lebron<sup>2</sup>  |  
Paul Bürkner<sup>3</sup>  | Sam Tomlinson<sup>1</sup>  | Bridget A. Emmett<sup>2</sup>  | Simon M. Smart<sup>1</sup> 

<sup>1</sup>UK Centre for Ecology & Hydrology,  
Lancaster Environment Centre, Lancaster,  
UK

<sup>2</sup>UK Centre for Ecology & Hydrology,  
Environment Centre Wales, Bangor, UK

<sup>3</sup>Cluster of Excellence SimTech, University  
of Stuttgart, Stuttgart, Germany

## Correspondence

Fiona M. Seaton  
Email: [fseaton@ceh.ac.uk](mailto:fseaton@ceh.ac.uk)

## Funding information

Natural Environment Research Council,  
Grant/Award Number: NE/R016429/1;  
Department for the Environment Food  
and Rural Affairs

**Handling Editor:** Qiuying Tian

## Abstract

1. Sulphur deposition through rainfall has led to species loss and ecosystem degradation globally, and across Europe huge reductions in sulphur emissions since the 1970s were expected to promote the recovery of acidified ecosystems. However, the rate and ecological impact of recovery from acidification in terrestrial ecosystems is still unclear as is the influence of management and climate, as to date there has been no long-term spatially extensive evaluation of these changes.
2. Here, we present data from thousands of sites across Great Britain (pH range 3.3–8.7) surveyed repeatedly from 1978–2019 and assess change in soil pH and plant acidity preference (Ellenberg R) in response to atmospheric deposition of sulphur and nitrogen. We analyse change in grasslands managed for pasture, referred to as high-intensity habitats, and compare to seminatural habitats comprising rough grassland, broadleaved woodland, bog and heathland, referred to as low-intensity habitats.
3. Soil pH increased from 1978 to 2007 but then decreased between 2007 and 2019, resulting in a net increase of ~0.2 pH units in low-intensity habitats but no change in high-intensity habitats. The community average Ellenberg R increased in seminatural habitats by ~0.2 units but remained stable in intensive grasslands.
4. In seminatural habitats, but not intensive grasslands, these changes in plant community composition were associated with the soil pH changes which were in turn linked to decreasing sulphur deposition and differences in rainfall.
5. Nitrogen deposition, which was relatively stable over the survey period, showed no additional effect upon soil acidity once sulphur deposition was accounted for.
6. **Synthesis:** Our results provide conclusive evidence that reductions in acid emissions are stimulating the gradual recovery of chronically acidified terrestrial ecosystems at a whole-country scale, while also suggesting this recovery is being compromised by changing climate and land management.

This is an open access article under the terms of the [Creative Commons Attribution](https://creativecommons.org/licenses/by/4.0/) License, which permits use, distribution and reproduction in any medium, provided the original work is properly cited.

© 2022 The Authors. *Journal of Ecology* published by John Wiley & Sons Ltd on behalf of British Ecological Society.

## KEYWORDS

atmospheric deposition, nitrogen deposition, plant community, precipitation, soil acidity, vegetation

## 1 | INTRODUCTION

Atmospheric deposition of sulphur (S) and nitrogen (N) compounds has led to the widespread acidification of natural ecosystems and resulting loss of biodiversity and changes in ecosystem functions (Bytnerowicz et al., 2007; Kirk et al., 2010; Maskell et al., 2010). In Europe and North America, S deposition dramatically declined in the late 20th and early 21st century due to switches away from fossil fuels and more effective monitoring and control of S emission sources. In China more recent declines in emissions are only now beginning to result in decreases in precipitation acidity while in other countries such as India emissions are still increasing (Grennfelt et al., 2020; Smith et al., 2011; Zhang et al., 2020). This raises the possibility of examining ecological recovery within areas now exposed to a long period of reduced S deposition in order to predict and manage change in areas where S deposition is still high. Within the UK, there was a 96% reduction in sulphur dioxide (SO<sub>2</sub>) emissions from 1970 to 2019, concurrent with a 57% decline in emissions of oxides of nitrogen (NO<sub>x</sub>). Ammonia (NH<sub>3</sub>) emissions have remained relatively stable, showing only a 13% decrease from 1980–2019 (NAEI (National Atmospheric Emissions Inventory), 2019). The late 20th century reduction in S deposition to natural ecosystems has been linked to decreases in soil and water acidity (Hughes et al., 2012; Kirk et al., 2010; Reynolds et al., 2013), while N deposition has been associated with both eutrophication and acidification effects upon plant communities (Bytnerowicz et al., 2007; Schweiger & Beierkuhnlein, 2017; Stevens et al., 2010; Tipping et al., 2021).

Decreasing soil acidity should influence plant community composition towards species adapted to less acidic, more nutrient rich environments (Peppler-Lisbach et al., 2020; Stevens, Duprè, et al., 2011). Decreasing aluminium solubility and toxicity with increasing pH is likely to increase soil microbial activity and facilitate colonisation of acid-sensitive plant species (Jones et al., 2019; Zhao & Shen, 2018). In addition, increased macronutrient availability, associated with an increase in soil pH (Zhao & Shen, 2018) and reduction in ionic aluminium, could theoretically unlock the eutrophying potential of accumulated N, particularly in areas most exposed to N deposition historically (Schneider et al., 2018; Smart et al., 2014; Stevens, Manning, et al., 2011). However, it should be noted that some specific elements (e.g. Ca<sup>2+</sup>, Mg<sup>2+</sup>, K<sup>+</sup>, and Na<sup>+</sup>) decrease under acidic conditions due to increased leaching and therefore recovery of availability of those nutrients would require additional inputs of these elements and not just soil pH recovery.

Nitrogen deposition not only acts as a eutrophying agent but may also add to the acid load, depending on how it is processed within catchments. Over the late 20th century, plant communities across Europe were observed to be shifting towards communities more adapted to higher nutrient conditions, which has largely been

attributed to changes in management intensity and N deposition but could also be related to changes in acidity (Diekmann & Duprè, 1997; Duprè et al., 2010; Smart et al., 2003).

Changes in the atmospheric deposition of acidity and nutrient N have been occurring at a time of increasing pressures from change in climate and land use, and the influence of interactions between these drivers on natural ecosystems have been identified (Bytnerowicz et al., 2007). Increasing temperature has been shown to influence plant and soil functional response to acid deposition in rainfall, in some cases leading to greater effects—for example increased susceptibility of plants to air pollution at higher temperatures due to increased stomatal opening—and in other cases leading to reduced effects—for example soil respiration increase with temperature being reduced by acid rain (Bytnerowicz et al., 2007; Chen et al., 2021). Changes in precipitation will influence both deposition of atmospheric pollutants and soil acidity directly through changes in soil moisture (Hole & Engardt, 2008; Marwanto et al., 2018; Yu et al., 2020). As soil moisture increases, soil pH also increases, due to increased anaerobic conditions that lead to a microbially mediated increase in proton consumption during denitrification reactions (Dobbie & Smith, 2001; Zárate-Valdez et al., 2006). Recent analysis of soil pH trends across England and Wales suggested that changes in management practices, and particularly the cessation of liming due to reduced subsidies, may have confounded recent soil pH recovery (Rawlins et al., 2017; Seaton et al., 2021). This shows that soils may in future either stabilise at the current pH, or potentially begin to acidify again with corresponding effects upon plant communities and ecosystem health and reversal of ecosystem recovery. On the other hand, recent proposals to increase carbon sequestration in soils by incorporating basalt or alternative rocks into cropland would lead to alkalisation of the soil (Beerling et al., 2018). Understanding the interrelationship between changes in management, climate, soil pH and vegetation is necessary to better predict the consequences of these technologies upon biotic communities across realistic combinations of ecosystem and land-use.

Here, we use data from the UKCEH Countryside Survey of Great Britain to evaluate trends in soil pH and plant community acidity preference (mean Ellenberg R) and examine their connection to atmospheric S and N deposition. The Countryside Survey (CS) comprises a representative sample of co-located vegetation and soil data from the British landscape. It was first carried out in 1978 and since then in 1990, 1998, 2007 and most recently a partial resurvey starting in 2019 (Wood et al., 2017). This long-term, large scale monitoring enables us to better evaluate change in seminatural ecosystems in response to a wide range of concurrent biotic and abiotic pressures and over timescales relevant to plant community assembly and related ecological processes. Due to the extensive quality assurance protocols that are part of this survey we are also

able to incorporate quantitative assessment of measurement error in the soils and vegetation data into our statistical modelling to more robustly detect change over time and attribute it to hypothesised drivers. We selected sites that were within seminatural habitats (low-intensity management) or intensively managed grassland (high-intensity management) habitats and estimated change over time in soil pH and vegetation community acidity preference, represented by mean Ellenberg R. We hypothesised that, over the last five decades of major reductions in acid deposition, soil pH and mean Ellenberg R values would have increased from their low levels towards nearer-neutral values due to recovery from acidification, but that high intensity management sites would show less change due to decreasing acid deposition occurring at the same time as a reduction in liming which had artificially increased soil pH in the mid-20th century. We also hypothesised that the increased sensitivity of cover-weighted estimates of Ellenberg R to environmental change would be counteracted by increased measurement error of cover estimates dependent on plot size. We then tested whether changes in soil pH were associated with decreases in atmospheric S deposition and with cumulative N deposition at each site reflecting legacy effects of acidifying N deposition in parallel with a eutrophying effect (Rowe et al., 2020). The relative influences of S deposition and N deposition upon pH change were evaluated within a Bayesian framework, also including the difference in field season rainfall between survey years to incorporate effects of changes in climate as represented by changing precipitation due to the known large influence of soil moisture upon soil acidity. We also hypothesised that the changes in soil pH resulted changes in mean Ellenberg R and hence plant species composition, and tested this using a multivariate Bayesian model.

## 2 | MATERIALS AND METHODS

### 2.1 | Field survey

The data presented here is from the UKCEH Countryside Survey, a repeated programme of field surveys with locations spread across the GB countryside (Figure 1, Carey et al., 2008). We include data from 1978, 1990, 1998 and 2007 as well as results from the recent resurveys of the previously surveyed sites. The recently surveyed sites were mostly visited in 2019; however, a small number in Wales were surveyed in 2016 (Emmett & the GMEP team, 2017). Within each 1 km square there are multiple vegetation plots, including five square plots measuring 14.14 by 14.14 m. These plots are surveyed for plant composition in a nested structure, with soil samples taken to 15 cm depth from a central position on the corner of the inner 2 by 2 m nest within the plot. Within the 2019 data, a subset of plots had only the inner 2 by 2 m square surveyed for vegetation (221 plots out of 559 plots). All vegetation data are available at the NERC Environmental Information Data Centre (EIDC): see the data availability statement. Broad habitat types were assigned to each plot by the surveyors according to JNCC guidance (Jackson, 2000). These broad habitats were grouped into high intensity management and

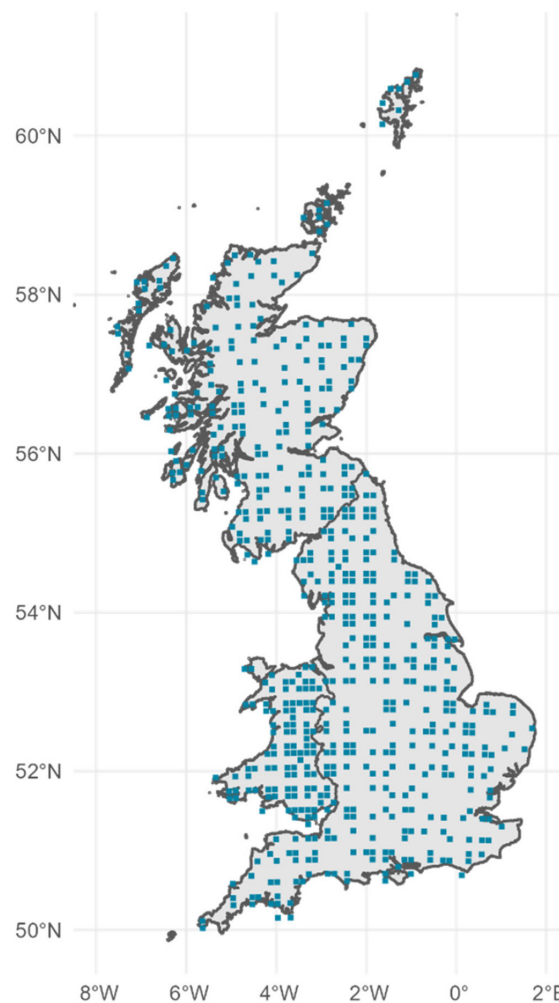


FIGURE 1 Map of survey square locations to the nearest 10 km square.

low intensity management land. The high intensity management land comprised improved and neutral grassland where the summed cover of agricultural forage species, that is *Lolium perenne*, *Lolium multiflorum* and *Trifolium repens*, is over 25%. The low intensity management land included the rest of the neutral grassland, acid grassland, broadleaved woodland, dwarf shrub heath, bog, bracken, fen, marsh, swamp and calcareous grassland. Coniferous woodland, arable, coastal and urban habitats were not included as we expected their Ellenberg scores to show limited relation to the drivers analysed as their plant communities are largely driven by human interference or dominated by saline influence. In total, within our management categories there are 6665 measurements (i.e. a plot recording from a specific year) from 2717 plots surveyed for vegetation across 5 years and 588 squares, with 3797 measurements having co-located soil measurements (no soil samples were taken in 1990). A total of 2383 measurements that had both plant and soils data were categorised as low-intensity management.

Soil pH was measured in deionised water, and additionally in 2007 and 2019 soil pH was also measured in a  $\text{CaCl}_2$  solution. For a full description of the soil methods see Emmett et al. (2008). All soil

physicochemical data is available online at the NERC EIDC; see the data availability statement. The measurement error of soil pH was calculated from randomly selected samples that were remeasured in 2007 and 2019. This procedure did not occur in 1978 and 1998; however, due to a slight difference in the soil pH measurement procedure in 1998, there was a process of remeasuring samples in both 1998 and 2007 to compare the methods (Black et al., 2002; Emmett et al., 2010). The error from these remeasurements was used to create an expected error of the difference between 1978 and 1998, and 1998 and 2007 respectively.

Within every plot, Ellenberg R scores were calculated from the known species scores, with either the unweighted average or an average weighted by proportion of cover. Ellenberg R is an ordinal score assigned to plant species that ranges from one to nine and indicates the preferred acidity of that plant species, which can be averaged over the plant community. It is part of a suite of Ellenberg scores originally developed for Central Europe and adapted for Great Britain by Hill et al. (2000). This procedure was repeated for the full 14.14 by 14.14 m plots and the inner 2 by 2 m nest. An estimate of the error in these plant community variables was taken from the plots resurveyed as part of the Quality Assurance procedures in the survey years from 1990 onwards, the 1978 error is assumed to be the same as the 1990 error (see Supplementary Table S4 for all of the error estimates). In order to extract a standard deviation for use in the statistical modelling of the change in Ellenberg R the difference between the Ellenberg R score from the original and repeat survey was fitted to a normal distribution using the MASS package (Venables & Ripley, 2002). To estimate the potential impacts of this shift in plant community upon plant service provision the Ellenberg R scores of each plant species were compared to known values of service provision, including nectar-yielding species (Baude et al., 2016), agricultural forage grasses and crop wild relatives (Jarvis et al., 2015), and food plants for lowland birds and butterfly larvae (Smart et al., 2000). All data manipulation and statistical analysis was undertaken in R version 4.0.3 (R Core Team, 2020), plots were created using ggplot2 (Wickham, 2009).

## 2.2 | Atmospheric data sources

Atmospheric N and S deposition was taken from a 1 km grid surface from the FRAME atmospheric chemistry transport model (Tipping et al., 2017; Tomlinson et al., 2021) and is available at the NERC EIDC, see data availability statement. Cumulative N deposition for the 8 years previous to survey was calculated for each square, as was the difference in S deposition over the 8 years previous to survey. This time period for statistic calculation was chosen due to the limited temporal range of the 1 km FRAME atmospheric model outputs. Monthly rainfall data was taken from the HadUK-Grid 1 km gridded climate observations provided by the Met Office (Met Office et al., 2020). Monthly rainfall over the month of sampling and the 3 months previous was averaged for every plot surveyed. The

difference between the field season rainfalls was calculated for each year comparison.

## 2.3 | Statistical analysis

All statistical modelling presented here was undertaken in the BRMS package (v2.15.0) in R (v4.0.3), an interface to Stan (v2.21.2) (Bürkner, 2017; Carpenter et al., 2017). Ellenberg R and soil pH were both separately modelled as a response to an interaction between year (categorical) and the management intensity, with square identity as a group effect and a first order autoregressive process by year (sequentially numbered) and grouped by plot ID. The number of individual measurements in each model varied, with 6660 for the 4 m<sup>2</sup> unweighted Ellenberg R over 2717 plots, 6530 for the 4 m<sup>2</sup> cover weighted Ellenberg R over 2705 plots, and 6502 for the 200 m<sup>2</sup> Ellenberg R measurements over 2703 individual plots. For the soils' data, there were 3836 measurements of pH in water over 2323 plots, of which 2247 measurements were from the 21st century and had corresponding pH in CaCl<sub>2</sub> measurements. Pairwise contrasts between years were obtained using the EMMEANS package (v1.5.5-1, Lenth, 2021) and plotted using the TIDYBAYES package (v2.3.1, Kay, 2020).

To investigate the relationship between changing Ellenberg R and soil pH, they were modelled in a multivariate Bayesian model with measurement error in the response variables being included. The change in Ellenberg R was modelled as a function of the change in soil pH, with an interaction with management intensity also included. The change in soil pH was modelled as a function of the change in sulphur deposition in the eight-year period before the second survey, the cumulative N deposition in the eight-year period before the second survey and the difference in presurvey rainfall between the two time periods, to ensure standardisation of model coefficients all of these variables were scaled to have mean 0 and standard deviation of 1. The original means and standard deviations of these variables were - 5.3 and 4.5 for S deposition, 134 and 72 for N deposition, and 8 and 30 for field season rainfall. All response variables were assumed to follow a Gaussian likelihood, and had square identity as a random effect, as well as an autoregressive component that accounted for time period where change occurred and had plot identity as a grouping factor. See Supplementary Methods for example for the code used to fit these models. We also explored the possibility of a nonlinear relationship between S and N deposition and soil pH change but found it was not appropriate for our data, see Supplementary Methods for a discussion of this. Residuals from each model were plotted against broad habitat to check if there were systematic differences between habitat types (data not shown, no differences were found). The sample size varied per model due to differing numbers of small and large vegetation plots, being 1309 for the mean Ellenberg scores from the largest plots, and 1336 and 1458 for the weighted and unweighted mean Ellenberg scores from the 4 m<sup>2</sup> subplots respectively. Models were compared with 10-fold cross-validation using the LOO package (v2.4.1, Vehtari et al., 2020).

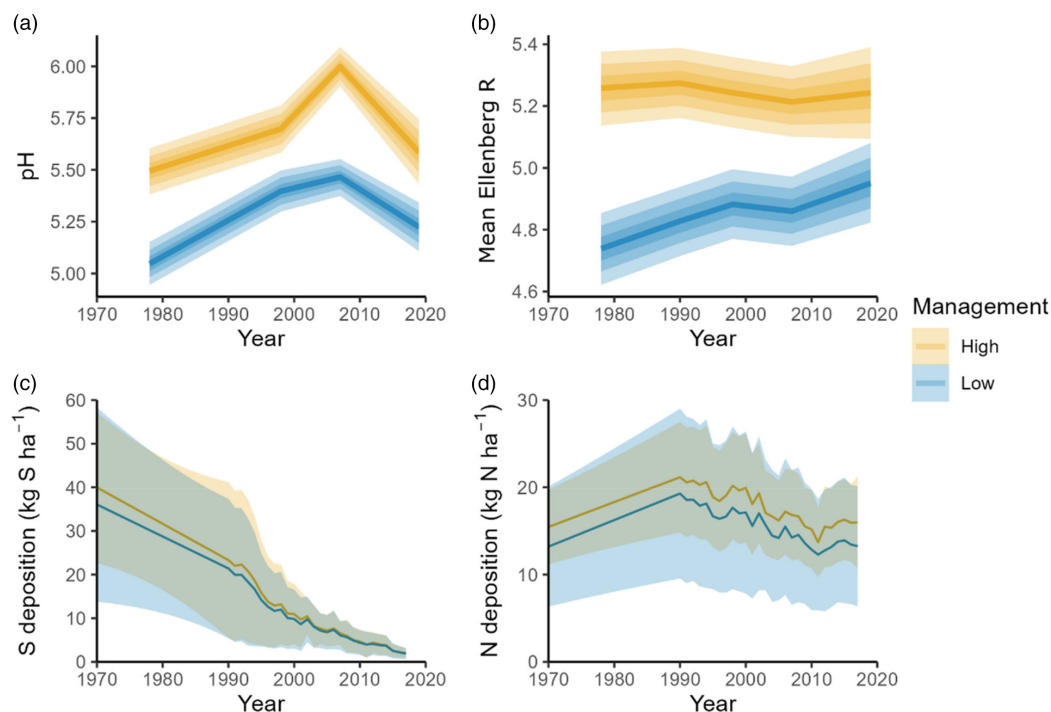
### 3 | RESULTS

#### 3.1 | Trends in soil pH and Ellenberg R

Over the 40-year survey period, soil pH increased in both high and low-intensity management habitats up until 2007, as reported previously from this data (Reynolds et al., 2013), but decreased in 2019 compared to 2007 (Figure 2a). Soil pH levels in 2019 were on average no different to the pH levels of 1978 and 1998 (Table 1)—note that no soils data was collected within the 1990 survey. However, the difference in acidity between 2007 and 2019 was much less apparent when pH was measured in a 0.01 M CaCl<sub>2</sub> solution, a method applied in the 21st century surveys only. Those data provided no evidence for a drop in mean pH from 2007 to 2019 in low-intensity management habitats, and a smaller drop in pH in high-intensity habitats (Table 1, Supplementary Figure S1). Over the survey period plant communities under low-intensity management showed sustained increases in mean Ellenberg R, while high-intensity management land showed no overall trend in mean Ellenberg R (Figure 2b, Supplementary Figure S2). In order to evaluate the influence of the mean Ellenberg R calculation method on the trend estimate, mean Ellenberg R was calculated with and without cover weighting, and with or without constraining to species enumerated in the innermost nest of the plot. Measurement error was highest in the cover-weighted and smaller plot-based measurements. All four mean Ellenberg R metrics showed a continued increase in low intensity habitats, while remaining stable in high-intensity habitats

(Supplementary Figure S2, Table S1). This indicates the robustness of these trends to both measurement method and the variation in sample size, as more 4 m<sup>2</sup> plots were surveyed due to changes in survey protocol across the years. The measured changes in soil pH and mean Ellenberg R occurred during a period of continuous decline in S deposition (Figure 2c) and span a period during which N deposition initially increased before declining again (Figure 2d) but against a backdrop of at least 200 years of elevated N deposition (Fowler et al., 2005). Rainfall during the survey period also varied across the different years, with the highest levels of rainfall in 2007 and the lowest in 1990 (Supplementary Figure S3). The increase in mean Ellenberg R in low-intensity habitats can be related to declines in plant species with low Ellenberg values, such as *Calluna vulgaris*, *Erica tetralix* and *Trichophorum cespitosum* (Table 2). In our dataset, higher mean Ellenberg R scores were associated with a greater diversity of plants and a higher number of species associated with multiple ecosystem functions, including nectar-yielding species, agricultural forage grasses, crop wild relatives, and food plants for lowland birds and butterfly larvae (Supplementary Figure S4).

Overall, soil pH increased the most in the sites that showed the largest decreases in S deposition and the greatest cumulative N deposition (Figure 3). These two variables were negatively correlated such that the sites with the biggest decreases in S deposition also showed the largest cumulative N deposition (Pearson correlation  $-0.65$ ). The estimated relationships between pH change and the two variables were broadly similar for the two management intensities. Changes in mean Ellenberg R were slightly negatively correlated



**FIGURE 2** The change in soil pH and mean Ellenberg R (from the 4 m<sup>2</sup> plot and unweighted average) as modelled in response to management regime and year, represented by the median estimate and ribbons for the 50%, 80% and 95% tiles. Also shown are the changes in average S and N deposition across all of the plots in the two management categories, represented by a mean line and ribbons for the mean  $\pm$  standard deviation. Note, 1 km resolution S and N deposition estimates are not available between 1970 and 1990.



**TABLE 1** Modelled difference between years for both pH in deionised water and pH in CaCl<sub>2</sub> (most recent period only). The estimated difference and the lower and upper limits of the 95% highest posterior density (HPD) interval are given for each year contrast. Differences where the 95% HPD do not cross zero are in bold

	Contrast	pH (DIW)			pH (CaCl <sub>2</sub> )		
		Estimate	Lower HPD	Upper HPD	Estimate	Lower HPD	Upper HPD
High intensity management	1998–1978	<b>0.203</b>	<b>0.110</b>	<b>0.294</b>	–	–	–
	2007–1978	<b>0.504</b>	<b>0.417</b>	<b>0.598</b>	–	–	–
	2019–1978	0.092	–0.063	0.231	–	–	–
	2007–1998	<b>0.302</b>	<b>0.206</b>	<b>0.388</b>	–	–	–
	2019–1998	–0.112	–0.262	0.037	–	–	–
	2019–2007	<b>–0.412</b>	<b>0.548</b>	<b>0.278</b>	<b>–0.141</b>	<b>–0.272</b>	<b>–0.007</b>
Low intensity management	1998–1978	<b>0.350</b>	<b>0.279</b>	<b>0.425</b>	–	–	–
	2007–1978	<b>0.418</b>	<b>0.345</b>	<b>0.496</b>	–	–	–
	2019–1978	<b>0.177</b>	<b>0.066</b>	<b>0.281</b>	–	–	–
	2007–1998	<b>0.068</b>	<b>0.001</b>	<b>0.137</b>	–	–	–
	2019–1998	<b>–0.173</b>	<b>–0.276</b>	<b>–0.065</b>	–	–	–
	2019–2007	<b>–0.242</b>	<b>–0.337</b>	<b>–0.149</b>	0.018	–0.069	0.107

with S deposition and slightly positively correlated with cumulative N deposition across all four mean Ellenberg R measurement methods; however, the magnitude of this was small, with the greatest Pearson correlations being –0.10 and 0.04 for S and N deposition, respectively, with the unweighted score from the larger plot. For low intensity habitat, only the magnitude was marginally higher, –0.14 and 0.08.

### 3.2 | Soil pH change drives Ellenberg R change

We found a positive relationship between soil pH and mean Ellenberg R change, with an estimated increase in mean Ellenberg R of ~0.15 units per unit increase in soil pH (~30% of the interquartile range in mean Ellenberg R, Figure 4, Supplementary Figure S6, Table S2). This was consistent across both management intensities and all four mean Ellenberg R metrics (Supplementary Figure S6). Temporal autocorrelation was estimated to be negative for both pH and Ellenberg R, indicating a “regression to the mean” effect and therefore justifying accounting for correlation of observations over time. The hierarchical 1 km square effect was greater in the soil pH model than in the mean Ellenberg R model, and there was no evidence of correlation between the square effects in the two models (Supplementary Table S2, Figure S5). The weighted measurements of mean Ellenberg R appeared slightly more responsive to change in soil pH in the high intensity management habitats but this effect was small, while absent in the low intensity management habitat (Supplementary Figure S6). There was no effect of habitat type upon the model residuals, indicating no identifiable difference in the response of mean Ellenberg R to pH change, or pH change to atmospheric deposition, between woodland, grassland and heathland. If we had not taken into account measurement error in soil pH and mean Ellenberg R this relationship would have remained positive

but at a smaller effect size of around 0.1 units of mean Ellenberg R change for a change in soil pH of 1 unit (Supplementary Table S3).

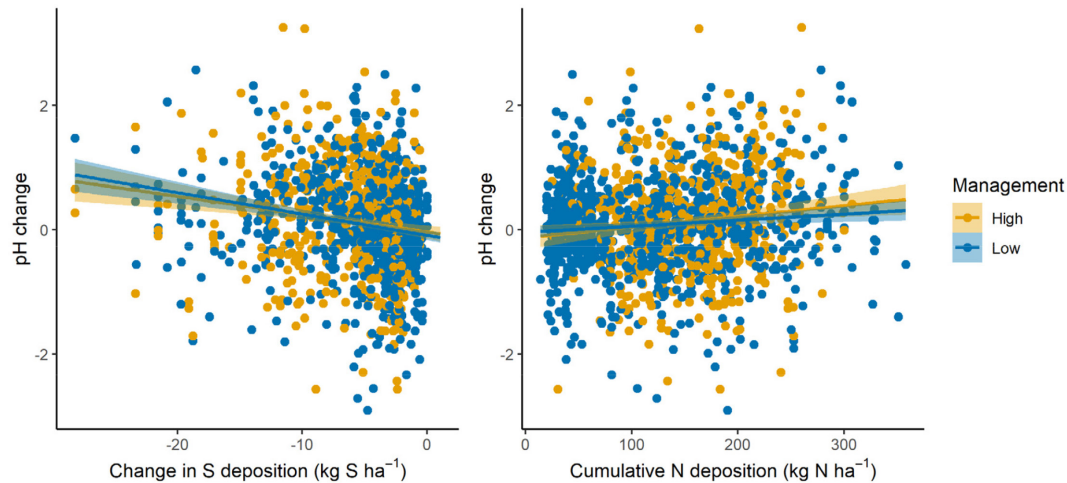
Soil pH change was still slightly negatively associated with the change in S deposition in low intensity habitat once changes in field season rainfall and N deposition were accounted for. However, the effect was smaller for high intensity management areas and the 95% interval on the posterior parameter distribution included zero (Figure 5, Supplementary Figure S6). Soil pH change was positively associated with the difference in presurvey rainfall between survey years in all four models, with an increase of around 0.1 pH units for every 30mm increase in rainfall across the field season (95% quantile 0.04–0.14, Supplementary Table S2). The N deposition effect was reduced to around zero once the S deposition effect and rainfall changes were accounted for (Figure 5, Supplementary Figure S6, Table S2), with a positive correlation between the N and S deposition effects showing that when the model estimated a strong positive effect of N deposition this only occurred with a corresponding decrease in the estimated effect of S deposition (Pearson correlation ~0.75 in all four models). Adding direct linkages from N and S deposition to mean Ellenberg R resulted in no improvement in model fit, with no evidence of a residual effect of N and S deposition upon mean Ellenberg R change once pH change is accounted for (Supplementary Figure S7). However, within the unweighted mean Ellenberg R score for the whole 200m<sup>2</sup> plot, in theory the most sensitive to change in rare species, there was some evidence for a direct negative effect of S deposition on mean Ellenberg R change in low intensity management habitats only (Supplementary Figure S7).

## 4 | DISCUSSION

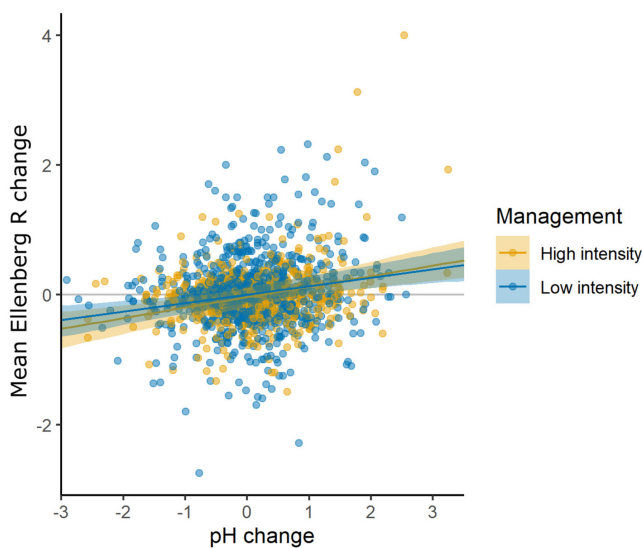
Plant communities in seminatural habitats have shown progressive recovery from acidification over the past 40 years, demonstrating

**TABLE 2** The proportion of plots each species appears in per year and management category, limited to plant species that appear in at least 35% of plots in at least one management/year combination and have a known Ellenberg R score

Species	Ellenberg R	High intensity management						Low intensity management					
		1978 (n = 355)	1990 (n = 610)	1998 (n = 664)	2007 (n = 720)	2019 (n = 133)	1978 (n = 503)	1990 (n = 1014)	1998 (n = 1225)	2007 (n = 1221)	2019 (n = 281)		
<i>Agrostis stolonifera</i>	7	0.293	0.451	0.405	0.436	0.263	0.101	0.201	0.269	0.236	0.171		
<i>Cirsium arvense</i>	7	0.321	0.333	0.363	0.364	0.12	0.097	0.122	0.125	0.143	0.103		
<i>Dactylis glomerata</i>	7	0.53	0.498	0.423	0.356	0.173	0.149	0.137	0.146	0.142	0.096		
<i>Phleum pratense sens.lat.</i>	7	0.482	0.43	0.405	0.275	0.195	0.068	0.052	0.061	0.043	0.018		
<i>Rumex obtusifolius</i>	7	0.346	0.41	0.449	0.482	0.293	0.054	0.066	0.082	0.086	0.043		
<i>Bellis perennis</i>	6	0.431	0.349	0.309	0.225	0.128	0.127	0.083	0.073	0.045	0.028		
<i>Holcus lanatus</i>	6	0.575	0.564	0.604	0.708	0.353	0.348	0.357	0.376	0.4	0.263		
<i>Lolium perenne</i>	6	0.901	0.974	0.947	0.932	0.421	0.151	0.17	0.171	0.152	0.103		
<i>Poa annua</i>	6	0.535	0.444	0.473	0.342	0.12	0.135	0.107	0.103	0.066	0.05		
<i>Poa trivialis</i>	6	0.437	0.308	0.384	0.375	0.293	0.111	0.107	0.153	0.136	0.132		
<i>Ranunculus repens</i>	6	0.659	0.59	0.697	0.739	0.338	0.225	0.233	0.219	0.221	0.135		
<i>Stellaria media</i>	6	0.355	0.325	0.324	0.278	0.12	0.056	0.059	0.056	0.044	0.028		
<i>Trifolium repens</i>	6	0.825	0.856	0.839	0.849	0.353	0.258	0.241	0.232	0.231	0.149		
<i>Cerastium fontanum</i>	5	0.544	0.515	0.539	0.649	0.346	0.264	0.235	0.257	0.234	0.16		
<i>Agrostis capillaris</i>	4	0.372	0.338	0.426	0.478	0.188	0.423	0.45	0.427	0.404	0.206		
<i>Anthoxanthum odoratum</i>	4	0.13	0.154	0.178	0.21	0.15	0.455	0.41	0.43	0.398	0.249		
<i>Festuca ovina agg.</i>	4	0.062	0.031	0.023	0.019	0.015	0.356	0.309	0.249	0.142	0.142		
<i>Galium saxatile</i>	3	0.014	0.018	0.029	0.011	0.03	0.336	0.367	0.37	0.352	0.164		
<i>Molinia caerulea</i>	3	0	0.003	0.005	0.007	0	0.433	0.417	0.387	0.377	0.167		
<i>Nardus stricta</i>	3	0.011	0.003	0.009	0.013	0.008	0.404	0.371	0.344	0.312	0.132		
<i>Potentilla erecta</i>	3	0.037	0.021	0.027	0.024	0.023	0.604	0.575	0.522	0.509	0.253		
<i>Calluna vulgaris</i>	2	0	0.002	0.002	0.001	0	0.596	0.536	0.495	0.471	0.21		
<i>Deschampsia flexuosa</i>	2	0.008	0.005	0.005	0.004	0	0.35	0.361	0.351	0.331	0.132		
<i>Erica tetralix</i>	2	0	0	0	0	0	0.394	0.344	0.302	0.296	0.139		
<i>Juncus squarrosus</i>	2	0.003	0	0.005	0.006	0	0.386	0.374	0.34	0.314	0.139		



**FIGURE 3** Change in pH between survey periods is negatively related to the change in S deposition (left) and positively related to cumulative N deposition (right). Both deposition statistics are from the 8 year period prior to the second survey. The points are the actual data, with each point representing a site/time period combination, and the lines plus ribbons are the estimated mean and the 2.5% and 97.5% quantiles of that mean.



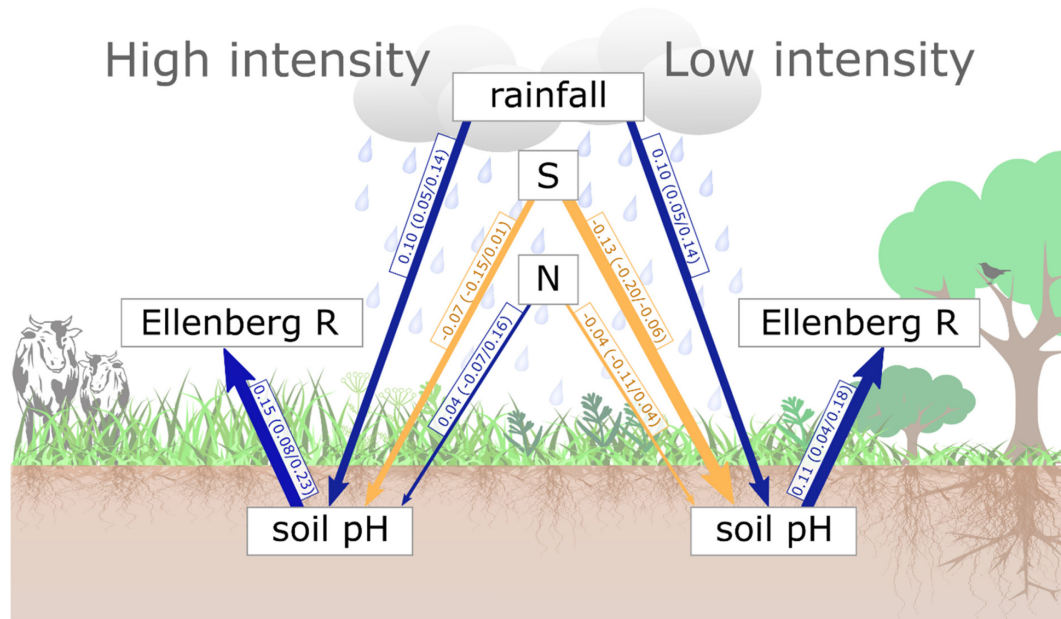
**FIGURE 4** Soil pH change is positively related to mean Ellenberg R change within both high and low intensity management habitats. Data and model shown here are the mean Ellenberg R measured within the 4 m<sup>2</sup> plot and unweighted by cover. The points are the actual data and the lines plus ribbons are the estimated mean and the 2.5% and 97.5% quantiles of that mean.

both the promising reality of recovery from pollution impacts within seminatural ecosystems as well as the longer time scales required to see the positive ecological impacts of legislative change. Our results clearly demonstrate that air pollution control policy can lead to ecological recovery even though reductions in S deposition may have been initiated by economic, rather than ecological, considerations (RoTAP, 2012). As expected, the pattern of recovery from acidification was not apparent in the more highly managed pasture habitats which showed relatively stable acidity preference over the past 40 years. This indicates that in both the above- and below-ground

parts of the ecosystem, intensive land management effects and higher pH starting conditions have to an extent eclipsed atmospheric deposition effects. However, this does not mean that these habitats have not responded to changes in soil acidity over time as we still found a clear link between soil pH change and Ellenberg R change in intensive grasslands. It appears that the lack of evidence for a direct link between plant community response and decreasing S deposition in intensive pasture is likely due to soil pH changes not being as strongly linked to S deposition changes in these systems.

Increases in soil pH across GB over the late 20th and first decade of the 21st century appear to have stalled, or in some cases reversed, in the past decade. We can be confident of the decreasing pH in high-intensity management areas, which was found in both soil pH in water and in CaCl<sub>2</sub>; however, low-intensity management habitats showed no change in soil pH in CaCl<sub>2</sub> versus a decline in soil pH in water. Our data can be compared to a previous study of soil pH from farm survey data, which indicated that soil pH has recently decreased in the north-west of England and Wales (Rawlins et al., 2017). The increasing acidity in land managed for pasture is potentially related to the decline in liming of agricultural soils across the UK, which is now below the level required to maintain soil pH in the productive zone (Goulding, 2016). Increasing liming or alternatively applying basalt to crop and pasture land could therefore increase pH again, and in the latter option, also provide a valuable service in carbon capture (Beerling et al., 2018). However, liming of agricultural soils in the UK dropped in the 1990s and has remained at a fairly constant level since 2000 (Holland et al., 2018; The British Survey of Fertiliser Practice, 2020), indicating that there may be other factors involved in the difference between 2007 and 2019 soil pH such as changes in fertiliser use. There is also the possibility that climate change may be impacting the recovery from acid deposition, as both changing temperature and precipitation have been found to





**FIGURE 5** Graphical representation of the multivariate model results (mean Ellenberg R score from the unweighted 4 m<sup>2</sup> plot) with results from high intensity management land on the left and low intensity management land on the right, where each arrow represents a specific model parameter and is labelled with the median parameter estimate (2.5%/97.5% quantiles). The rainfall effect was assumed to be constant in the two habitat categories but is shown separately for graphical clarity. Blue arrows represent positive median relationships and yellow negative, note that the 95% interval contains zero for the N deposition arrows and the S deposition arrows in high intensity habitats.

impact soil pH and interact with S deposition; moreover, we also found an effect of rainfall upon pH change (Adams et al., 2001; Chen et al., 2021; Li et al., 2019). Increasing rainfall could affect pH through increasing frequency of soil saturation events, leading to anaerobic conditions and thus increasing importance of proton consumption processes which promote N<sub>2</sub>O emissions and increasing pH (Davidson et al., 2000; Dobbie & Smith, 2001; Russow et al., 2000). The effect of rainfall upon soil pH will vary with soil texture, with heavier soils spending more time under saturated conditions after rainfall—the majority of our soils are loamy in texture, with clayey loam more common to the south and sandy loam more common to the north (Lawley, 2012). However, the extent of the difference between the predicted pH changes from the two different measurement methods—in water versus in CaCl<sub>2</sub>—raises the issue of whether our measured pH change optimally represents changes in “plant-visible” soil acidity. Soil pH measurements made in water are known to be more affected by salt solution and therefore soil moisture effects (Hester & Shelton, 1933; Kissel et al., 2009). Measurement of soil pH in CaCl<sub>2</sub> should be more robust to changes in soil moisture, and more closely relates to the ionic strength of the near-root and near-microbe surfaces, and so would be more suited for tracking changes over time in soil acidity relevant to plant communities and soil functions (Custos et al., 2020; Schofield & Taylor, 1955). Unfortunately, we do not have pH in CaCl<sub>2</sub> measurements for the entire soil series as this was first measured in 2007. Instead, we must consider carefully the role of soil moisture in driving the patterns of increasing pH in the early part of the time series. While field season rainfall across the UK in 1978, 1998 and 2019 field seasons was broadly similar,

the 2007 season was on average wetter, which may explain some of the increase in soil pH. Integrating rainfall measurements into our multivariate modelling allowed us to demonstrate how both S deposition and rainfall together influenced the soil pH measured over these time periods illustrating individual and additive roles for each driver. This also implies that ongoing impacts of reduced atmospheric deposition are likely to be modified by a backdrop of ongoing changes in precipitation again emphasising the importance of accounting for interactions between global change drivers when attributing signals of ecosystem change (Perring et al., 2018).

Our analysis has shown that the major drivers of soil pH change over the past 40 years are decreasing S deposition and variation in rainfall. Rainfall was found to be strongly positively related to soil pH change such that a wetter field season had higher soil pH on average, consistent with our knowledge of soil chemistry and previous studies on the effect of seasonality upon soil pH (Hester & Shelton, 1933; Kissel et al., 2009; Marwanto et al., 2018). Inclusion of this rainfall term also enables us to have greater confidence that the S deposition effect we have found is representative of a direct effect once changes in climate and therefore soil moisture are accounted for. While we found a strong effect of the decreases in S deposition upon soil pH, we found no clear evidence of an additional eutrophying effect of cumulative N deposition on plant species composition where soil pH had increased. It is possible that the eutrophication effect on Ellenberg R may be only slightly positive or nonlinear and thus not detected by our analysis; however, the noisiness of our data and the difficulties we encountered in fitting nonlinear models (see Supplementary Methods) indicate that this dataset would not be

able to distinguish the subtle nonlinear relationships implied by this hypothesis from ecological noise.

Our multivariate modelling demonstrates the close linkages between soil pH and plant species compositional change, tracked by the Ellenberg R indicator, with atmospheric deposition effects on the plant communities mediated by the changes in soil condition. The potential exception to this full mediation was the direct responsiveness of Ellenberg R to S deposition when the R score is measured as an unweighted average of the larger plot size. This particular formulation of the Ellenberg R score is more sensitive to rarer species and is also likely to be the least spatially coupled to the single point measurement of soil pH as it gives equal weight to plant species that are found in small numbers farther from the soil sampling location within the 200m<sup>2</sup> plot. As soil pH experiences high levels of spatial variation at a local scale (Ball & Williams, 1968), it may be that this link between S deposition and Ellenberg R change appears to be separate from soil pH change only due to this decoupling of the Ellenberg R and soil measurements. Surprisingly, we found only a limited interaction between management intensity and the Ellenberg R–pH relationship, despite having found divergent trends in soil pH and Ellenberg R change over time in high-intensity management habitats. The stability of Ellenberg R from 2007 to 2019, while soil pH decreased in high-intensity habitats could be related to lag effects or indicative of less close coupling of soil and vegetation change under intense management. However there was no indication of less close coupling of soil and vegetation change in the multivariate model results which showed a continued relationship between soil pH and Ellenberg R change in high intensity habitats. This was also unexpected due to the curvilinear relationship between Ellenberg R and soil pH, such that above pH 6 there tends to be a flattening of the Ellenberg R relationship with soil pH (Diekmann, 2003). Potential explanations for the persistence of the relationship between soil pH and Ellenberg R change in high-intensity management habitats include the co-occurrence of soil pH and plant community interventions in highly managed areas, such that as the soil is limed there is also introduction of high Ellenberg R plant species within seed mixes. It should also be noted that there was a lower response of soil pH change to S deposition within these high-intensity management habitats, indicating that acidity changes in both soil pH and plant communities are less affected by atmospheric deposition. Therefore, despite there being no overall trend in Ellenberg R in high-intensity pasture over the time period studied we can still conclude that the high-intensity pasture sites that did undergo a change in Ellenberg R were on average sites that showed equivalent change in soil pH.

While we identified a clear response by Ellenberg R to soil acidity, as originally intended by Ellenberg's scheme, species' Ellenberg R scores also tend to correlate with Ellenberg N (fertility) scores in a nonlinear fashion (Diekmann, 2003; Diekmann & Dupré, 1997). Therefore, as the plants that prefer acidic environments also prefer low-fertility environments, the changing Ellenberg R may be reflecting the dual drivers of change of decreasing acid rain and increasing fertilisation (Maskell et al., 2010; Peppler-Lisbach et al., 2020). We attempted to explore this possibility by inclusion of N deposition

within our modelling framework, which represented changes in atmospheric fertilisation of plant communities. Previously it has been proposed that decreasing acidity in aquatic systems may unlock an eutrophication effect such that the impacts of N deposition are greater as S deposition decreases (Schneider et al., 2018). This might also be expected to occur in land ecosystems as the impacts of aluminium toxicity decrease once pH is raised and macronutrient availability maximised above 5–6 (Jones et al., 2019; Stevens et al., 2010; Zhao & Shen, 2018). However, we found no evidence of effects of N deposition upon either soil pH or directly upon Ellenberg R change. While the range of our estimated N deposition is large enough to include some possibility of an effect, on balance the likelihood is that Ellenberg R change is driven by soil acidity change rather than changes in N fertilisation. This could partly be due to the measured N deposition in the 8 years prior to the survey not being representative of either historical N deposition, or the N accumulated within the soil. It is possible that phosphorus fertilisation or limitation could be linked to changes in Ellenberg R as phosphorus is known to differentially influence plant species of varying Ellenberg N scores (Löfgren et al., 2020). Use of phosphorus fertilisers has declined in the UK and there is some evidence of a decline in available phosphorus in Scottish soils from the 1980s to the present, which would affect both the fields directly fertilised and also leaching to the surrounding landscape (Lilly et al., 2020). However, analysis of changes from the 1990s to the present within data collected from large-scale surveys and to support farm management has not found a change in available phosphorus in UK soils (Edwards et al., 2016; Rawlins et al., 2017; Seaton et al., 2021). Residual variation in Ellenberg R change over these decades could be explained by the local-scale changes in nutrient availability, biotic interactions and land use that we were unable to consider in this broad-scale analysis.

The inclusion of measurement error within our modelling framework allowed for identification of a stronger relationship between soil pH change and Ellenberg R change than would have been found otherwise. Measurement error affects every part of the sampling to analysis pipeline, and it has frequently been found to be extensive and pervasive in ecological and soil science (Desaules, 2012; Morrison, 2016). Within our data, there were greater levels of measurement error within the Ellenberg R estimates that were weighted by plant cover, and in the smaller plots. Taking all of these errors into account resulted in robust relationships between Ellenberg R change both over time and in relation to pH change across all four measurement methods of the plant community. While we might expect the Ellenberg R scores weighted by plant cover to be more responsive to environmental change, it may be that this is balanced out by the increased error of these measurements (Diekmann, 2003), which could explain previous results showing no greater correlation of cover weighted Ellenberg scores with environmental variables (Carpenter & Goodenough, 2014; Käfer & Witte, 2004). Inclusion of measurement error within our analysis did limit the analysis we could perform due to the limited quality assurance data from the early survey years; however, we consider this to be well worth it for the increased realism of our results.

Our results indicate that positive effects on plant biodiversity and ecosystem service provision are likely to have resulted from the causal chain linking reduced S deposition to change in our index of plant acidity preferences. As this mean acidity index increases, conditions become more favourable to a larger pool of species. This also results in passive selection for larger subsets of species valued because of the support they provide to ecosystem services and functions (Supplementary Figure S4). These groups include plants that underpin positive services such as crop wild relatives (Jarvis et al., 2015), nectar-yielding species (Baude et al., 2016), agricultural forage grasses and food plants for lowland birds and butterfly larvae (Smart et al., 2000). However, there are other plant groups less beneficial to human activities such as injurious weeds that are also more common at higher Ellenberg R scores (Maskell et al., 2020). Overall, these changes in plant service provision indicate how changing atmospheric deposition not only influences soil acidity and thus plant composition but also acts through these changes in plant communities to influence the health of the whole ecosystem, including bird and pollinator communities.

The close linkages between the plant community and the soil chemical status we have found here demonstrate the range of potential future impacts of a variety of environmental stressors. Soil pH is an emergent property of the soil system that is responsive to a variety of factors as well as influencing a wide range of both microbially and chemically driven soil functions (Neina, 2019). The range of environmental stressors that ecosystems are currently experiencing can affect some elements of the soil and plant system more than others, for example soil fungal communities are known to be particularly responsive to synergistic effects of multiple stressors (Rillig et al., 2019). These changes in microbial communities could then feedback to soil pH changes with knock on effects and positive feedback loops influencing soil and plant health. Moreover, it is clear that changes in soil pH driven by anthropogenic changes in atmospheric deposition and land management will have concomitant impact on soil and general ecosystem health. Of particular concern is the potential for changes to occur on different timeframes, as seen here within the changes in the plant community over time relative to changes in soil pH. There have also been observed changes in the soil pH–carbon relationship over time in GB soils (Thomas et al., 2020). This raises the possibility of a change in the mechanisms that drive soil and ecosystem functions and increasing disconnect between differing ecosystem components, such that future change will become more difficult to predict and mitigate (Hawkes & Keitt, 2015; Smith et al., 2009).

## 5 | CONCLUSIONS

Our results provide evidence that reductions in acid emissions have stimulated the recovery of chronically acidified terrestrial ecosystems at a whole-country scale over decadal time periods. We have shown that across Great Britain soil pH has increased in the late 20th followed by declining in the 21st century, with the extent of this

peak and decline being greater in intensively managed grasslands. Plant communities have responded to this changing soil pH, with an overall increase in mean Ellenberg R in seminatural habitats. We have linked these ecosystem changes to changing seasonal rainfall and decreasing sulphur deposition, with no evidence of an additional effect of nitrogen deposition. Our findings indicate that ecosystem recovery from acidification is affected by changing precipitation patterns and intensity of land management, showing the importance of understanding the interplay of climate, land management and atmospheric pollution when predicting and managing ecosystem recovery from anthropogenic stressors.

## AUTHOR CONTRIBUTIONS

Simon M. Smart conceived this project, with Fiona M. Seaton and Simon M. Smart designed the analyses with input from David A. Robinson, Don Monteith, Inma Lebron, and Bridget A. Emmett. David A. Robinson and Inma Lebron provided the soils data, Simon M. Smart the plant data and Sam Tomlinson the atmospheric deposition data. Fiona M. Seaton carried out the statistical analysis with assistance from Paul Bürkner. Fiona M. Seaton wrote the first draft of the manuscript, with subsequent revisions by Simon M. Smart, Don Monteith, David A. Robinson, Sam Tomlinson, Paul Bürkner and Inma Lebron. All authors read and approved the final draft of this manuscript.

## ACKNOWLEDGEMENTS

This work was funded by the Natural Environment Research Council (part of UK Research and Innovation) under the UK-SCAPE Programme delivering National Capability (Grant Reference NE/R016429/1). The Countryside Survey was funded by a consortium of funders led by the Natural Environment Research Council and the Department for the Environment Food and Rural Affairs: the full list available at the Countryside Survey web-page (countrysidesurvey.org.uk).

## CONFLICT OF INTEREST

The authors declare no competing interests.

## PEER REVIEW









The peer review history for this article is available at <https://publons.com/publon/10.1111/1365-2745.14039>.

## DATA AVAILABILITY STATEMENT

All vegetation, soils and atmospheric deposition data is available for download from the NERC Environmental Information Data Centre. Vegetation data is available at: <https://doi.org/10.5285/67bbfabb-d981-4ced-b7e7-225205de9c96> (Barr, Bunce, Smart, & Whittaker, 2014); <https://doi.org/10.5285/26e79792-5ffc-4116-9ac7-72193dd7f191> (Barr, Bunce, Gillespie, Hallam, et al., 2014); <https://doi.org/10.5285/07896bb2-7078-468c-b56d-fb8b41d47065> (Barr, Bunce, Gillespie, Howard, et al., 2014); <https://doi.org/10.5285/85c71959-0f7c-4f04-b3a7-152673107a85> (Bunce et al., 2014); <https://doi.org/10.5285/fd6ae272-aeb5-4573-8e8a-7ccfae64f506>

(Smart et al., 2020). Soils data is available at: <https://doi.org/10.5285/85c71959-0f7c-4f04-b3a7-152673107a85> (Bunce et al., 2016); <https://doi.org/10.5285/9d1eada2-3f8b-4a7b-a9b0-a7a04d05ff72> (Black et al., 2016); <https://doi.org/10.5285/79669141-cde5-49f0-b24d-f3c6a1a52db8> (Emmett et al., 2016); <https://doi.org/10.5285/aaada12b-0af0-44ba-8ffc-5e07f410f435> (Robinson et al., 2020). Atmospheric deposition data is available at: <https://doi.org/10.5285/9b203324-6b37-4e91-b028-e073b197fb9f> (Tomlinson et al., 2020).

## ORCID

Fiona M. Seaton  <https://orcid.org/0000-0002-2022-7451>  
 David A. Robinson  <https://orcid.org/0000-0001-7290-4867>  
 Don Monteith  <https://orcid.org/0000-0003-3219-1772>  
 Inma Lebron  <https://orcid.org/0000-0001-8610-9717>  
 Paul Bürkner  <https://orcid.org/0000-0001-5765-8995>  
 Sam Tomlinson  <https://orcid.org/0000-0002-3237-7596>  
 Bridget A. Emmett  <https://orcid.org/0000-0002-2713-4389>  
 Simon M. Smart  <https://orcid.org/0000-0003-2750-7832>

## REFERENCES

- Adamson, J. K., Scott, W. A., Rowland, A. P., & Beard, G. R. (2001). Ionic concentrations in a blanket peat bog in northern England and correlations with deposition and climate variables. *European Journal of Soil Science*, 52(1), 69–79. <https://doi.org/10.1046/j.1365-2389.2001.t01-1-00350.x>
- Ball, D. F., & Williams, W. M. (1968). Variability of soil chemical properties in two uncultivated brown earths. *Journal of Soil Science*, 19(2), 379–391. <https://doi.org/10.1111/j.1365-2389.1968.tb01548.x>
- Barr, C. J., Bunce, R. G. H., Gillespie, M. K., Hallam, C. J., Howard, D. C., Maskell, L. C., Ness, M. J., Norton, L. R., Scott, R. J., Smart, S. M., Stuart, R. C., & Wood, C. M. (2014). *Countryside survey 1990 vegetation plot data*. NERC Environmental Information Data Centre. <https://doi.org/10.5285/26e79792-5ffc-4116-9ac7-72193dd7f191>
- Barr, C. J., Bunce, R. G. H., Gillespie, M. K., Howard, D. C., Maskell, L. C., Norton, L. R., Scott, R. J., Shield, E. R., Smart, S. M., Stuart, R. C., Watkins, J. W., & Wood, C. M. (2014). *Countryside survey 1998 vegetation plot data*. NERC Environmental Information Data Centre. <https://doi.org/10.5285/07896bb2-7078-468c-b56d-fb8b41d47065>
- Barr, C. J., Bunce, R. G. H., Smart, S. M., & Whittaker, H. A. (2014). *Countryside survey 1978 vegetation plot data*. NERC Environmental Information Data Centre. <https://doi.org/10.5285/67bbfabb-d981-4ced-b7e7-225205de9c96>
- Baude, M., Kunin, W. E., Boatman, N. D., Conyers, S., Davies, N., Gillespie, M. A. K., Morton, R. D., Smart, S. M., & Memmott, J. (2016). Historical nectar assessment reveals the fall and rise of floral resources in Britain. *Nature*, 530(7588), 85–88. <https://doi.org/10.1038/nature16532>
- Beerling, D. J., Leake, J. R., Long, S. P., Scholes, J. D., Ton, J., Nelson, P. N., Bird, M., Kantzas, E., Taylor, L. L., Sarkar, B., Kelland, M., DeLucia, E., Kantola, I., Müller, C., Rau, G., & Hansen, J. (2018). Farming with crops and rocks to address global climate, food and soil security. *Nature Plants*, 4(3), 138–147. <https://doi.org/10.1038/s41477-018-0108-y>
- Black, H. I. J., Chaplow, J. S., Ainsworth, G., Coward, P. A., Creamer, R., Ellwood, S., Horne, J., Hornung, M., Kennedy, V. H., Raine, L., Osborn, D., Parekh, N. R., Parrington, J., Poskitt, J. M., Potter, E., Reeves, N., Rowland, A. P., Self, P., Turner, S., ... Wright, J. (2016). *Soil physico-chemical properties 1998 [countryside survey]*. NERC Environmental Information Data Centre. <https://doi.org/10.5285/9d1eada2-3f8b-4a7b-a9b0-a7a04d05ff72>
- Black, H. I. J., Garnett, J. S., Ainsworth, G., Kennedy, V. H., Monson, F., Raine, L., Osborn, D., Parekh, N. R., Parrington, J., Poskitt, J. M., Ptoover, E., Reeves, N., Rowland, A., Self, P., Turner, S., Watkins, J., Woods, C., & Wright, J. (2002). *MASQ: Monitoring and assessing soil quality in Great Britain. Survey model 6: Soils and pollution*. NERC/Centre for Ecology & Hydrology.
- Bunce, R. G. H., Carey, P. D., Maskell, L. C., Norton, L. R., Scott, R. J., Smart, S. M., & Wood, C. M. (2014). *Countryside survey 2007 vegetation plot data*. NERC Environmental Information Data Centre. <https://doi.org/10.5285/57f97915-8ff1-473b-8c77-2564cbd747bc>
- Bunce, R. G. H., Hornung, M., Hatton, A., Stevens, P. A., Cummins, R., & French, D. (2016). *Soil physico-chemical properties 1978 [countryside survey]*. NERC Environmental Information Data Centre. <https://doi.org/10.5285/85c71959-0f7c-4f04-b3a7-152673107a85>
- Bürkner, P.-C. (2017). Brms: An R package for Bayesian multilevel models using Stan. *Journal of Statistical Software*, 80(1), 1–28. <https://doi.org/10.18637/jss.v080.i01>
- Bytnerowicz, A., Omasa, K., & Paoletti, E. (2007). Integrated effects of air pollution and climate change on forests: A northern hemisphere perspective. *Environmental Pollution*, 147(3), 438–445. <https://doi.org/10.1016/j.envpol.2006.08.028>
- Carey, P. D., Wallis, S., Chamberlain, P. M., Cooper, A., Emmett, B. A., Maskell, L. C., McCann, T., Murphy, J., Norton, L. R., Reynolds, B., Scott, W. A., Simpson, I. C., Smart, S. M., & Ulyett, J. M. (2008). *Countryside survey: UK results from 2007*. NERC/Centre for Ecology & Hydrology.
- Carpenter, B., Gelman, A., Hoffman, M. D., Lee, D., Goodrich, B., Betancourt, M., Brubaker, M. A., Guo, J., Li, P., & Riddell, A. (2017). Stan: A probabilistic programming language. *Journal of Statistical Software*, 76(1), 1–32. <https://doi.org/10.18637/jss.v076.i01>
- Carpenter, W., & Goodenough, A. (2014). How robust are community-based plant bioindicators? Empirical testing of the relationship between Ellenberg values and direct environmental measures in woodland communities. *Community Ecology*, 15(1), 1–11. <https://doi.org/10.1556/ComEc.15.2014.1.1>
- Chen, S., Zhang, X., Sang, L., Sun, L., & Wu, J. (2021). Simulated acid rain offset a warming-induced increase in soil respiration but did not impact the temperature sensitivity of soil respiration in a cropland. *Applied Soil Ecology*, 164, 103936. <https://doi.org/10.1016/j.apsoil.2021.103936>
- Custos, J. M., Moyne, C., & Sterckeman, T. (2020). How root nutrient uptake affects rhizosphere pH: A modelling study. *Geoderma*, 369, 114314. <https://doi.org/10.1016/j.geoderma.2020.114314>
- Davidson, E. A., Keller, M., Erickson, H. E., Verchot, L. V., & Veldkamp, E. (2000). Testing a conceptual model of soil emissions of nitrous and nitric oxides. *Bioscience*, 50(8), 667–680. [https://doi.org/10.1641/0006-3568\(2000\)050\[0667:TACMOS\]2.0.CO;2](https://doi.org/10.1641/0006-3568(2000)050[0667:TACMOS]2.0.CO;2)
- Desaules, A. (2012). Measurement instability and temporal bias in chemical soil monitoring: Sources and control measures. *Environmental Monitoring and Assessment*, 184(1), 487–502. <https://doi.org/10.1007/s10661-011-1982-1>
- Diekmann, M. (2003). Species indicator values as an important tool in applied plant ecology - a review. *Basic and Applied Ecology*, 4(6), 493–506. <https://doi.org/10.1078/1439-1791-00185>
- Diekmann, M., & Dupré, C. (1997). Acidification and eutrophication of deciduous forests in northwestern Germany demonstrated by indicator species analysis. *Journal of Vegetation Science*, 8(6), 855–864. <https://doi.org/10.2307/3237030>
- Dobbie, K. E., & Smith, K. A. (2001). The effects of temperature, water-filled pore space and land use on N<sub>2</sub>O emissions from an imperfectly drained gleysol. *European Journal of Soil Science*, 52(4), 667–673. <https://doi.org/10.1046/j.1365-2389.2001.00395.x>
- Dupré, C., Stevens, C. J., Ranke, T., Bleeker, A., Peppeler-Lisbach, C., Gowing, D. J. G., Dise, N. B., Dorland, E., Bobbink, R., & Diekmann,



- M. (2010). Changes in species richness and composition in European acidic grasslands over the past 70 years: the contribution of cumulative atmospheric nitrogen deposition. *Global Change Biology*, 16(1), 344–357. <https://doi.org/10.1111/j.1365-2486.2009.01982.x>
- Edwards, A. C., Sinclair, A. H., Coull, M., Crooks, W., Rees, R. M., & Lumsdon, D. G. (2016). Regional trends in Scottish advisory soil acidity and phosphorus results: Significance of management history, land use and soil attributes. *Soil Use and Management*, 32(June), 44–53. <https://doi.org/10.1111/sum.12221>
- Emmett, B. A., Frogbrook, Z. L., Chamberlain, P. M., Griffiths, R., Pickup, R., Poskitt, J., Reynolds, B., Rowe, E., Spurgeon, D., Wilson, J., & Wood, C. M. (2008). *Countryside survey technical report no. 03/07: Soils manual*. NERC/Centre for Ecology & Hydrology.
- Emmett, B. A., Reynolds, B., Chamberlain, P. M., Rowe, E., Spurgeon, D., Brittain, S. A., Frogbrook, Z., Hughes, S., Lawlor, A. J., Poskitt, J., Potter, E., Robinson, D. A., Scott, A., Wood, C., & Woods, C. (2010). *Countryside survey: Soils report from 2007*. NERC/Centre for Ecology & Hydrology.
- Emmett, B. A., Reynolds, B., Chamberlain, P. M., Rowe, E., Spurgeon, D., Brittain, S. A., Frogbrook, Z., Hughes, S., Lawlor, A. J., Poskitt, J., Potter, E., Robinson, D. A., Scott, A., Wood, C. M., & Woods, C. (2016). *Soil physico-chemical properties 2007 [countryside survey]*. NERC Environmental Information Data Centre. <https://doi.org/10.5285/79669141-cde5-49f0-b24d-f3c6a1a52db8>
- Emmett, B. A., & the GMEP team. (2017). *Glastir monitoring & evaluation programme. Final report to Welsh Government*. NERC/Centre for Ecology & Hydrology.
- Fowler, D., O'Donoghue, M., Muller, J. B. A., Smith, R. I., Dragosits, U., Skiba, U., Sutton, M. A., & Brimblecombe, P. (2005). A chronology of nitrogen deposition in the UK between 1900 and 2000. *Water, Air, & Soil Pollution: Focus*, 4(6), 9–23. <https://doi.org/10.1007/s11267-005-3009-9>
- Goulding, K. W. T. (2016). Soil acidification and the importance of liming agricultural soils with particular reference to the United Kingdom. *Soil Use and Management*, 32(3), 390–399. <https://doi.org/10.1111/sum.12270>
- Grennfelt, P., Engleryd, A., Forsius, M., Hov, Ø., Rodhe, H., & Cowling, E. (2020). Acid rain and air pollution: 50 years of progress in environmental science and policy. *Ambio*, 49(4), 849–864. <https://doi.org/10.1007/s13280-019-01244-4>
- Hawkes, C. V., & Keitt, T. H. (2015). Resilience vs. historical contingency in microbial responses to environmental change. *Ecology Letters*, 18(7), 612–625. <https://doi.org/10.1111/ele.12451>
- Hester, J. B., & Shelton, F. A. (1933). Seasonal variation of pH in field soils. *Journal of the American Society of Agronomy*, 25(4), 299–300.
- Hill, M. O., Roy, D. B., Mountford, J. O., & Bunce, R. G. H. (2000). Extending Ellenberg's indicator values to a new area: An algorithmic approach. *Journal of Applied Ecology*, 37(1), 3–15. <https://doi.org/10.1046/j.1365-2664.2000.00466.x>
- Hole, L., & Engardt, M. (2008). Climate change impact on atmospheric nitrogen deposition in northwestern Europe: A model study. *Ambio*, 37(1), 9–17. [https://doi.org/10.1579/0044-7447\(2008\)37\[9:CCIOAN\]2.0.CO;2](https://doi.org/10.1579/0044-7447(2008)37[9:CCIOAN]2.0.CO;2)
- Holland, J. E., Bennett, A. E., Newton, A. C., White, P. J., McKenzie, B. M., George, T. S., Pakeman, R. J., Bailey, J. S., Fornara, D. A., & Hayes, R. C. (2018). Liming impacts on soils, crops and biodiversity in the UK: A review. *Science of the Total Environment*, 610–611, 316–332. <https://doi.org/10.1016/j.scitotenv.2017.08.020>
- Hughes, S., Reynolds, B., Norris, D. A., Brittain, S. A., Dere, A. L., Woods, C., Armstrong, L. K., Harman, S. A., & Wickham, H. D. (2012). Recovery of sulfate saturated soils in the Plynlimon catchments, mid-Wales following reductions in atmospheric S inputs from the 1980s to 2011. *Journal of Environmental Monitoring*, 14(6), 1531–1541. <https://doi.org/10.1039/c2em30070b>
- Jackson, D. L. (2000). *Guidance on the interpretation of the biodiversity broad habitat classification (terrestrial and freshwater types): Definitions and the relationships with other classifications, JNCC report 307*. JNCC.
- Jarvis, S., Fielder, H., Hopkins, J., Maxted, N., & Smart, S. (2015). Distribution of crop wild relatives of conservation priority in the UK landscape. *Biological Conservation*, 191, 444–451. <https://doi.org/10.1016/j.biocon.2015.07.039>
- Jones, D. L., Cooledge, E. C., Hoyle, F. C., Griffiths, R. I., & Murphy, D. V. (2019). pH and exchangeable aluminum are major regulators of microbial energy flow and carbon use efficiency in soil microbial communities. *Soil Biology and Biochemistry*, 138, 107584. <https://doi.org/10.1016/j.soilbio.2019.107584>
- Käfer, J., & Witte, J.-P. M. (2004). Cover-weighted averaging of indicator values in vegetation analyses. *Journal of Vegetation Science*, 15(5), 647. [https://doi.org/10.1658/1100-9233\(2004\)015\[0647:caoiv\]2.0.co;2](https://doi.org/10.1658/1100-9233(2004)015[0647:caoiv]2.0.co;2)
- Kay, M. (2020). Tidybayes: Tidy data and Geoms for Bayesian models. R package version 2.3.1. <https://doi.org/10.5281/zenodo.1308151>
- Kirk, G. J. D., Bellamy, P. H., & Lark, R. M. (2010). Changes in soil pH across England and Wales in response to decreased acid deposition. *Global Change Biology*, 16(11), 3111–3119. <https://doi.org/10.1111/j.1365-2486.2009.02135.x>
- Kissel, D. E., Sonon, L., Vendrell, P. F., & Isaac, R. A. (2009). Salt concentration and measurement of soil pH. *Communications in Soil Science and Plant Analysis*, 40(1–6), 179–187. <https://doi.org/10.1080/00103620802625377>
- Lawley, R. (2012). *User guide: soil parent material 1km dataset* (p. 20). British Geological Survey Internal Report, OR/14/Q25.
- Lenth, R. (2021). *emmeans: Estimated marginal means, aka least-squares means* (R package version 1.5.5-1). <https://CRAN.R-project.org/package=emmeans>
- Li, Y., Wang, Y., Wang, Y., & Wang, B. (2019). Effects of simulated acid rain on soil respiration and its component in a mixed coniferous-broadleaved forest of the three gorges reservoir area in Southwest China. *Forest Ecosystems*, 6(1), 1–16. <https://doi.org/10.1186/s40663-019-0192-0>
- Lilly, A., Baggaley, N. J., & Edwards, A. C. (2020). Changes in the carbon concentrations and other soil properties of some Scottish agricultural soils: Evidence from a resampling campaign. *Soil Use and Management*, 36(2), 299–307. <https://doi.org/10.1111/sum.12562>
- Löfgren, O., Hall, K., Schmid, B. C., & Prentice, H. C. (2020). Grasslands ancient and modern: Soil nutrients, habitat age and their relation to Ellenberg N. *Journal of Vegetation Science*, 31(3), 367–379. <https://doi.org/10.1111/jvs.12856>
- Marwanto, S., Watanabe, T., Iskandar, W., Sabiham, S., & Funakawa, S. (2018). Effects of seasonal rainfall and water table movement on the soil solution composition of tropical peatland. *Soil Science and Plant Nutrition*, 64(3), 386–395. <https://doi.org/10.1080/00380768.2018.1436940>
- Maskell, L. C., Henrys, P., Pescott, O. L., & Smart, S. M. (2020). Long-term trends in the distribution, abundance and impact of native “injurious” weeds. *Applied Vegetation Science*, 23(4), 635–647. <https://doi.org/10.1111/avsc.12518>
- Maskell, L. C., Smart, S. M., Bullock, J. M., Thompson, K., & Stevens, C. J. (2010). Nitrogen deposition causes widespread loss of species richness in British habitats. *Global Change Biology*, 16(2), 671–679. <https://doi.org/10.1111/j.1365-2486.2009.02022.x>
- Met Office, Hollis, D., McCarthy, M., Kendon, M., Legg, T., & Simpson, I. (2020). *HadUK-Grid gridded climate observations on a 1km grid over the UK, v1.0.2.1 (1862-2019)*. Centre for Environmental Data Analysis.
- Morrison, L. W. (2016). Observer error in vegetation surveys: A review. *Journal of Plant Ecology*, 9(4), 367–379. <https://doi.org/10.1093/jpe/rtv077>
- NAEI (National Atmospheric Emissions Inventory). (2019). *Data*. <https://naei.beis.gov.uk/data/>
- Neina, D. (2019). The role of soil pH in plant nutrition and soil remediation. *Applied and Environmental Soil Science*, 9(5794869), 1–9. <https://doi.org/10.1155/2019/5794869>



- Peppler-Lisbach, C., Stanik, N., Könitz, N., & Rosenthal, G. (2020). Long-term vegetation changes in *Nardus* grasslands indicate eutrophication, recovery from acidification, and management change as the main drivers. *Applied Vegetation Science*, 23(4), 508–521. <https://doi.org/10.1111/avsc.12513>
- Perring, M. P., Diekmann, M., Midolo, G., Schellenberger Costa, D., Bernhardt-Römermann, M., Otto, J. C. J., Gilliam, F. S., Hedwall, P. O., Nordin, A., Dirnböck, T., Simkin, S. M., Máliš, F., Blondeel, H., Brunet, J., Chudomelová, M., Durak, T., De Frenne, P., Hédli, R., Kopecký, M., ... Verheyen, K. (2018). Understanding context dependency in the response of forest understorey plant communities to nitrogen deposition. *Environmental Pollution*, 242, 1787–1799. <https://doi.org/10.1016/j.envpol.2018.07.089>
- R Core Team. (2020). *R: A language and environment for statistical computing*. R Foundation for Statistical Computing.
- Rawlins, B. G., Marchant, B., Stevenson, S., & Wilmer, W. (2017). Are data collected to support farm management suitable for monitoring soil indicators at the national scale? *European Journal of Soil Science*, 68(2), 235–248. <https://doi.org/10.1111/ejss.12417>
- Reynolds, B., Chamberlain, P. M., Poskitt, J., Woods, C., Scott, W. A., Rowe, E. C., Robinson, D. A., Frogbrook, Z. L., Keith, A. M., Henrys, P. A., Black, H. I. J., & Emmett, B. A. (2013). Countryside survey: National “soil change” 1978–2007 for topsoils in Great Britain—Acidity, carbon, and total nitrogen status. *Vadose Zone Journal*, 12(2), 1–15. <https://doi.org/10.2136/vzj2012.0114>
- Rillig, M. C., Ryo, M., Lehmann, A., Aguilar-Trigueros, C. A., Buchert, S., Wulf, A., Iwasaki, A., Roy, J., & Yang, G. (2019). The role of multiple global change factors in driving soil functions and microbial biodiversity. *Science*, 366(6467), 886–890. <https://doi.org/10.1126/science.aay2832>
- Robinson, D. A., Alison, J., Andrews, C., Brentegani, M., Chetiu, N., Dart, S., Emmett, B. A., Fitos, E., Garbutt, R. A., Gray, A., Henrys, P. A., Hunt, A., Keenan, P. O., Keith, A. M., Koblizek, E., Lebron, I., Millani Lopes Mazzetto, J., Pallett, D. W., Pereira, M. G., ... Wood, C. M. (2020). *Topsoil physico-chemical properties from the UKCEH countryside survey, Great Britain, 2019*. NERC Environmental Information Data Centre. <https://doi.org/10.5285/aaada12b-0af0-44ba-8ffc-5e07f410f435>
- RoTAP. (2012). *Review of transboundary air pollution: acidification, eutrophication, ground level ozone and heavy metals in the UK*. Contract Report to the Department for Environment, Food and Rural Affairs, Centre for Ecology & Hydrology.
- Rowe, E., Mitchell, Z., Tomlinson, S., Levy, P., Banin, L., Sawicka, K., Martin Hernandez, C., & Dore, A. (2020). *Trends Report 2020: trends in critical load and critical level exceedances in the UK. Report to Defra under Contract AQ0843, CEH Project NEC05708*. [https://uk-air.defra.gov.uk/library/reports?report\\_id=1001](https://uk-air.defra.gov.uk/library/reports?report_id=1001)
- Russow, R., Sich, I., & Neue, H.-U. (2000). The formation of the trace gases NO and N<sub>2</sub>O in soils by the coupled processes of nitrification and denitrification: Results of kinetic 15N tracer investigations. *Chemosphere - Global Change Science*, 2(3–4), 359–366. [https://doi.org/10.1016/S1465-9972\(00\)00012-X](https://doi.org/10.1016/S1465-9972(00)00012-X)
- Schneider, S. C., Oulehle, F., Krám, P., & Hruška, J. (2018). Recovery of benthic algal assemblages from acidification: How long does it take, and is there a link to eutrophication? *Hydrobiologia*, 805(1), 33–47. <https://doi.org/10.1007/s10750-017-3254-8>
- Schofield, R. K., & Taylor, A. W. (1955). The measurement of soil pH. *Soil Science Society of America Journal*, 19(2), 164–167. <https://doi.org/10.2136/sssaj1955.03615995001900020013x>
- Schweiger, A. H., & Beierkuhnlein, C. (2017). The ecological legacy of 20th century acidification carried on by ecosystem engineers. *Applied Vegetation Science*, 20(2), 215–224. <https://doi.org/10.1111/avsc.12259>
- Seaton, F. M., Barrett, G., Burden, A., Creer, S., Fitos, E., Garbutt, A., Griffiths, R. I., Henrys, P., Jones, D. L., Keenan, P., Keith, A., Lebron, I., Maskell, L., Pereira, M. G., Reinsch, S., Smart, S. M., Williams, B., Emmett, B. A., & Robinson, D. A. (2021). Soil health cluster analysis based on national monitoring of soil indicators. *European Journal of Soil Science*, 72(6), 2414–2429. <https://doi.org/10.1111/ejss.12958>
- Smart, S. M., Andrews, C., Fitos, E., Garbutt, R. A., Gray, A., Henrys, P. A., Koblizek, E., Pallett, D. W., Robinson, D. A., Rose, R. J., Rowe, R. L., Scarlett, P., Towill, J., Wagner, M., Williams, B., & Wood, C. M. (2020). *Vegetation plot data from the UKCEH countryside survey, Great Britain, 2019*. NERC Environmental Information Data Centre. <https://doi.org/10.5285/fd6ae272-aeb5-4573-8e8a-7ccfae64f506>
- Smart, S. M., Clarke, R. T., van de Poll, H. M., Robertson, E. J., Shield, E. R., Bunce, R. G. H., & Maskell, L. C. (2003). National-scale vegetation change across Britain; an analysis of sample-based surveillance data from the countryside surveys of 1990 and 1998. *Journal of Environmental Management*, 67(3), 239–254. [https://doi.org/10.1016/S0301-4797\(02\)00177-9](https://doi.org/10.1016/S0301-4797(02)00177-9)
- Smart, S. M., Ellison, A. M., Bunce, R. G. H., Marrs, R. H., Kirby, K. J., Kimberley, A., Scott, A. W., & Foster, D. R. (2014). Quantifying the impact of an extreme climate event on species diversity in fragmented temperate forests: the effect of the October 1987 storm on British broadleaved woodlands. *Journal of Ecology*, 102(5), 1273–1287. <https://doi.org/10.1111/1365-2745.12291>
- Smart, S. M., Firbank, L. G., Bunce, R. G. H., & Watkins, J. W. (2000). Quantifying changes in abundance of food plants for butterfly larvae and farmland birds. *Journal of Applied Ecology*, 37(3), 398–414. <https://doi.org/10.1046/j.1365-2664.2000.00508.x>
- Smith, M. D., Knapp, A. K., & Collins, S. L. (2009). A framework for assessing ecosystem dynamics in response to chronic resource alterations induced by global change. *Ecology*, 90(12), 3279–3289. <https://doi.org/10.1890/08-1815.1>
- Smith, S. J., Van Aardenne, J., Klimont, Z., Andres, R. J., Volke, A., & Delgado Arias, S. (2011). Anthropogenic sulfur dioxide emissions: 1850–2005. *Atmospheric Chemistry and Physics*, 11(3), 1101–1116. <https://doi.org/10.5194/acp-11-1101-2011>
- Stevens, C., Duprè, C., Gaudnik, C., Dorland, E., Dise, N., Gowing, D., Bleeker, A., Alard, D., Bobbink, R., Fowler, D., Vandvik, V., Corcket, E., Mountford, J. O., Aarrestad, P. A., Muller, S., & Diekmann, M. (2011). Changes in species composition of European acid grasslands observed along a gradient of nitrogen deposition. *Journal of Vegetation Science*, 22(2), 207–215. <https://doi.org/10.1111/j.1654-1103.2010.01254.x>
- Stevens, C. J., Manning, P., Van den Berg, L. J. L., De Graaf, M. C. C., Wamelink, G. W., Boxman, A. W., Bleeker, A., Vergeer, P., Arroniz-Crespo, M., Limpens, J., Lamers, L. P. M., Bobbink, R., & Dorland, E. (2011). Ecosystem responses to reduced and oxidized nitrogen impacts in European terrestrial habitats. *Environmental Pollution*, 159, 665–676. <https://doi.org/10.1016/j.envpol.2010.12.008>
- Stevens, C. J., Thompson, K., Grime, J. P., Long, C. J., & Gowing, D. J. G. (2010). Contribution of acidification and eutrophication to declines in species richness of calcifuge grasslands along a gradient of atmospheric nitrogen deposition. *Functional Ecology*, 24(2), 478–484. <https://doi.org/10.1111/j.1365-2435.2009.01663.x>
- The British Survey of Fertiliser Practice. (2020). *Fertiliser use on farm crops for crop year 2019*. Department for Environment, Food and Rural Affairs (Defra) and Scottish Government, UK.
- Thomas, A., Cosby, B. J., Henrys, P., & Emmett, B. (2020). Patterns and trends of topsoil carbon in the UK: Complex interactions of land use change, climate and pollution. *Science of the Total Environment*, 729, 138330. <https://doi.org/10.1016/j.scitotenv.2020.138330>
- Tipping, E., Davies, J. A. C., Henrys, P. A., Jarvis, S. G., & Smart, S. M. (2021). Long-term effects of atmospheric deposition on British plant species richness. *Environmental Pollution*, 281, 117017. <https://doi.org/10.1016/j.envpol.2021.117017>
- Tipping, E., Davies, J. A. C., Henrys, P. A., Kirk, G. J. D., Lilly, A., Dragosits, U., Carnell, E. J., Dore, A. J., Sutton, M. A., & Tomlinson, S. J. (2017). Long-term increases in soil carbon due to ecosystem fertilization by atmospheric nitrogen deposition demonstrated by regional-scale

- modelling and observations. *Scientific Reports*, 7(1), 1890. <https://doi.org/10.1038/s41598-017-02002-w>
- Tomlinson, S. J., Carnell, E. J., Dore, A. J., & Dragosits, U. (2020). *Nitrogen deposition in the UK at 1km resolution, 1990-2017*. NERC Environmental Information Data Centre. <https://doi.org/10.5285/9b203324-6b37-4e91-b028-e073b197fb9f>
- Tomlinson, S. J., Carnell, E. J., Dore, A. J., & Dragosits, U. (2021). Nitrogen deposition in the UK at 1 km resolution from 1990 to 2017. *Earth System Science Data*, 13(10), 4677–4692. <https://doi.org/10.5194/essd-13-4677-2021>
- Vehtari, A., Gabry, J., Magnusson, M., Yao, Y., Bürkner, P.-C., Paananen, T., & Gelman, A. (2020). *loo: Efficient leave-one-out cross-validation and WAIC for Bayesian models*. <https://mc-stan.org/loo/>
- Venables, W. N., & Ripley, B. D. (2002). *Modern applied statistics with S (fourth)*. Springer.
- Wickham, H. (2009). *ggplot2: Elegant graphics for data analysis*. Springer-Verlag New York. R package version 3.3.3.
- Wood, C. M., Smart, S. M., Bunce, R. G. H., Norton, L. R., Maskell, L. C., Howard, D. C., Scott, W. A., & Henrys, P. A. (2017). Long-term vegetation monitoring in Great Britain - the countryside survey 1978-2007 and beyond. *Earth System Science Data*, 9(2), 445–459. <https://doi.org/10.5194/essd-9-445-2017>
- Yu, S., Mo, Q., Chen, Y., Li, Y., Li, Y., Zou, B., Xia, H., Jun, W., Li, Z., & Wang, F. (2020). Effects of seasonal precipitation change on soil respiration processes in a seasonally dry tropical forest. *Ecology and Evolution*, 10(1), 467–479. <https://doi.org/10.1002/ece3.5912>
- Zárate-Valdez, J. L., Zasoski, R. J., & Läuchli, A. E. (2006). Short-term effects of moisture content on soil solution pH and soil eh. *Soil Science*, 171(5), 423–431. <https://doi.org/10.1097/01.ss.000022887.13383.08>
- Zhang, X., Zhao, L., Xu, J., Chen, D., Wu, X., & Cheng, M. (2020). Declining precipitation acidity from H<sub>2</sub>SO<sub>4</sub> and HNO<sub>3</sub> across China inferred by OMI products. *Atmospheric Environment*, 224, 117359. <https://doi.org/10.1016/j.atmosenv.2020.117359>
- Zhao, X. Q., & Shen, R. F. (2018). Aluminum–nitrogen interactions in the soil–plant system. *Frontiers in Plant Science*, 9, 807. <https://doi.org/10.3389/fpls.2018.00807>

## SUPPORTING INFORMATION

Additional supporting information can be found online in the Supporting Information section at the end of this article.

**How to cite this article:** Seaton, F. M., Robinson, D. A., Monteith, D., Lebron, I., Bürkner, P., Tomlinson, S., Emmett, B. A., & Smart, S. M. (2022). Fifty years of reduction in sulphur deposition drives recovery in soil pH and plant communities. *Journal of Ecology*, 00, 1–15. <https://doi.org/10.1111/1365-2745.14039>